

151°30'E

151°35'E

151°40'E

151°45'E

151°50'E

151°55'E

152°00'E

CHUUK

UNIQUE LANDFORMS



7°40'N

7°55'N

7°30'N

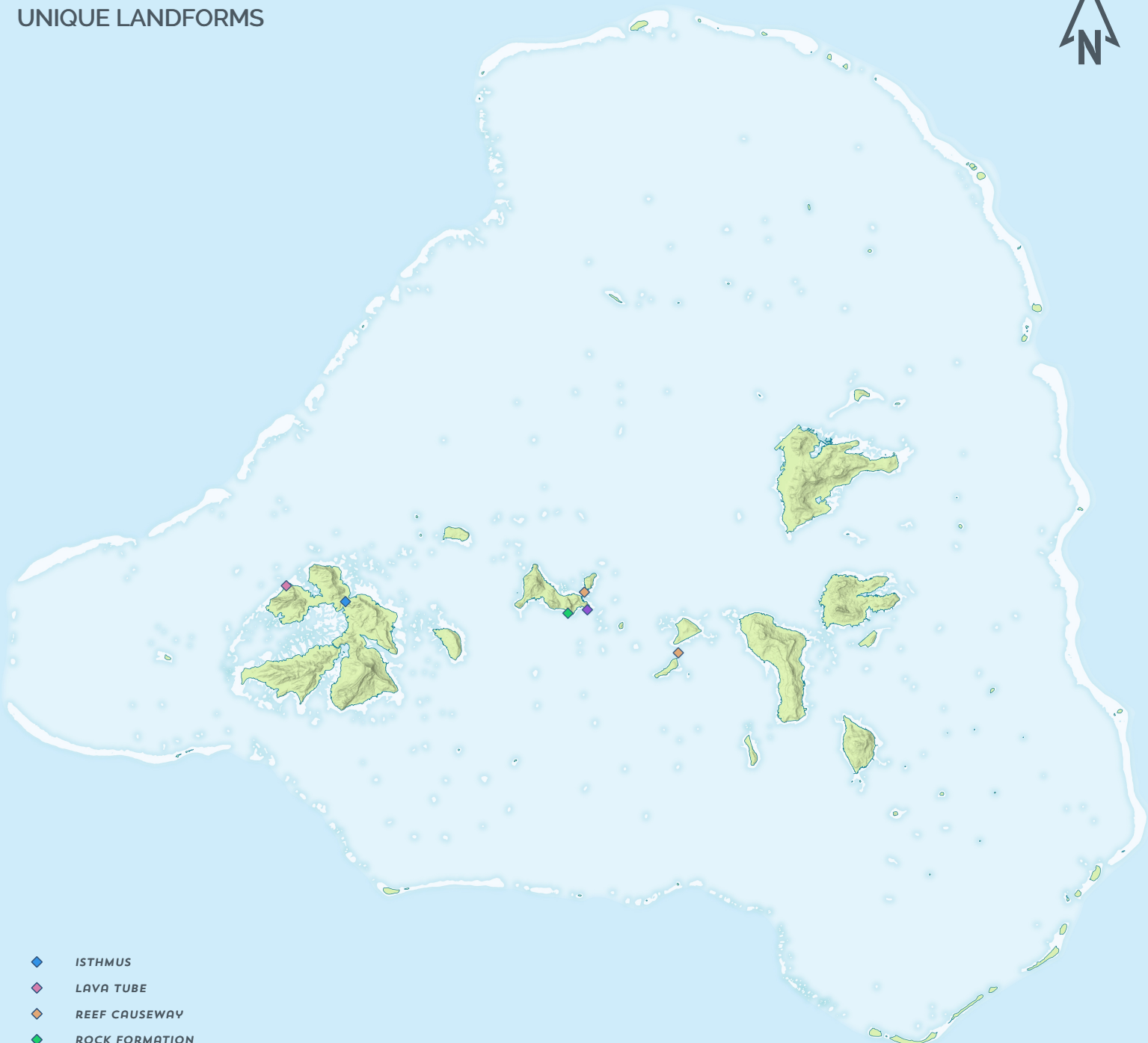
7°25'N

7°20'N

7°15'N

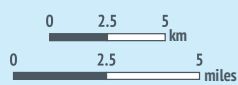
7°10'N

7°05'N



- ◆ ISTHMUS
- ◆ LAVA TUBE
- ◆ REEF CAUSEWAY
- ◆ ROCK FORMATION
- ◆ SEA CAVES

- LAND
- REEF
- LAGOON



DIGITAL ATLAS OF MICRONESIA

Created by



Island Research & Education Initiative (IREI)
www.islandresearch.org



Water and Environmental Research Institute of the Western Pacific (WERI)
www.weriguam.org



CHUUK MODULE

Chief editor
Co-editor
Controller
Advisors

Danko Taboroši
Maria Kottermair
Snyther Bliza
John W. Jenson
Myeong-Ho Yeo
Ibrahim Mohammed
Jan Rykr
Brad Mori
Curtis Graham
Douglas Marar

Programmer
Cartographer
Reviewers



National Government of the Federated States of Micronesia



US Geological Survey
WRI 104-B Program (2020)

www.islands.fm/atlas



Data used in this atlas are from a variety of sources. They include IREI, USGS, NOAA, USDA-NRCS/USFS, UOG, PDC, TNC, Chuuk EPA, Chuuk HPO, and the governments of FSM and Chuuk State. For the specific data used in this map, please see www.islands.fm/atlas/sources



IREI
PO Box PS 303
Palikir, Pohnpei
FM 96941

irei@islandresearch.org
www.islandresearch.org
www.facebook.com/irei.micronesia
www.youtube.com/user/IREIvideos



This map is for educational and awareness purposes only. It contains no definitive positional or attribute information. See the full disclaimer at www.islands.fm/atlas/disclaimer



Location: Rectangle indicates the Federated States of Micronesia. Red dot indicates the location of the island shown on the main map.



UTM_58N
GCS_WGS_1984



Last updated: 09/2020