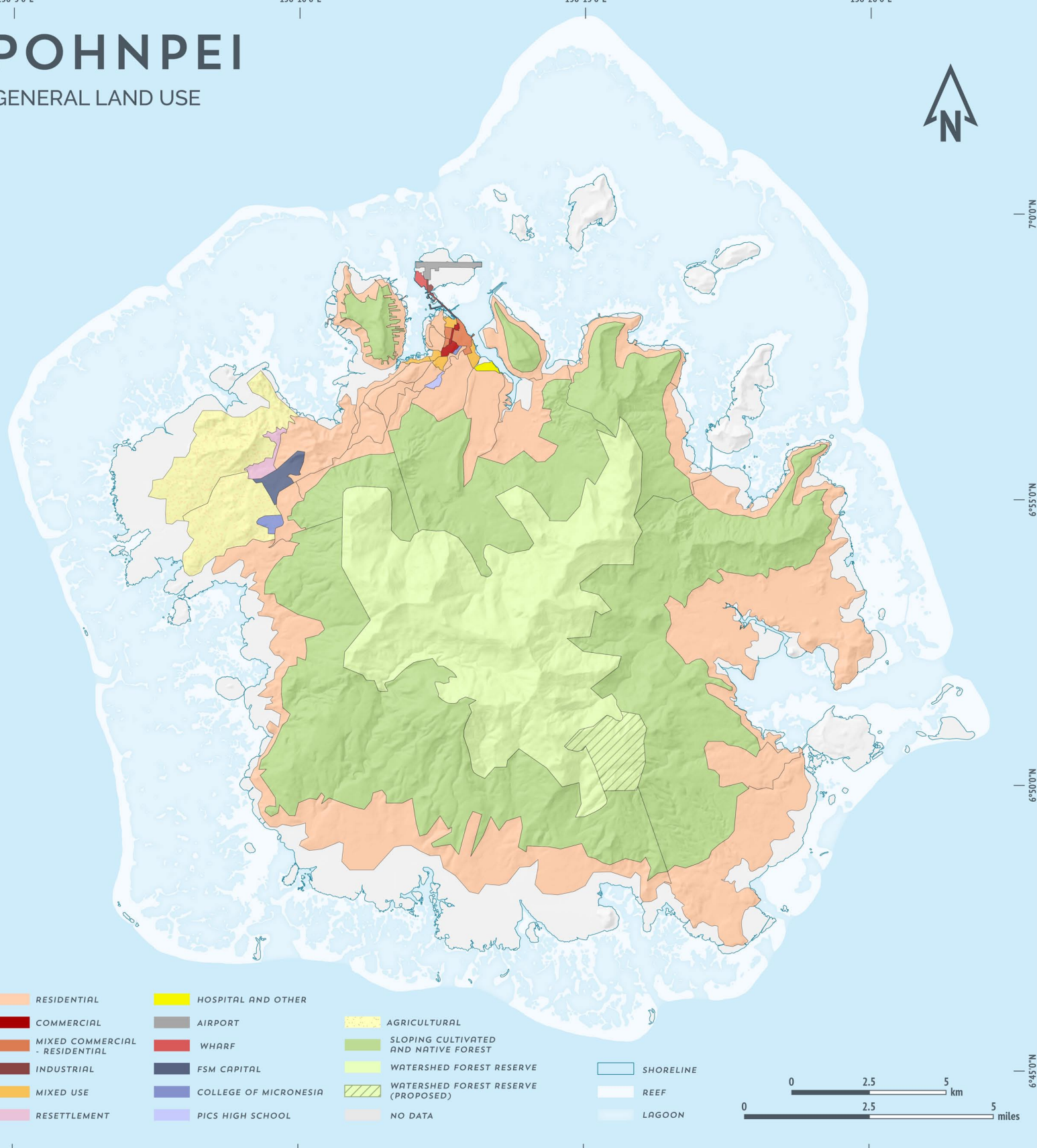


POHNPEI

GENERAL LAND USE



DIGITAL ATLAS OF MICRONESIA

Created by



Island Research & Education Initiative (IREI)
www.islandresearch.org



Water and Environmental Research Institute of the Western Pacific (WERI)
www.weriguam.org



POHNPEI MODULE
MAIN ISLAND UNIT

Chief editor
Co-editor
Programmer
Cartographer
Advisors

Danko Taborošī
Maria Kottermair
Ibrahim Mohammed
Jan Rylr
Shahram Khosrowpanah
Peterson Anson
Jocyleen Anson
Snyther Biza
Lara Payne

Supported by



US Geological Survey
WRI 104-B Program (2016)



Pohnpei State
Government



www.islands.fm/atlas



Data used in this atlas are from a variety of sources. They include IREI, USGS, NOAA, USDA-NRCS/USFS, PDC, The Nature Conservancy, and the governments of FSM and Pohnpei State. For the specific data used in this map, please see www.islands.fm/atlas/sources



IREI
PO Box PS 303
Palikir, Pohnpei
FM 96941

irei@islandresearch.org
www.islandresearch.org
www.facebook.com/irei.micronesia
www.youtube.com/user/IREIvideos



This map is for educational and awareness purposes only. It contains no definitive positional or attribute information. See the full disclaimer at www.islands.fm/atlas/disclaimer



Location:
Rectangle indicates the Federated States of Micronesia.
Red dot indicates the location of the island shown on the main map.



UTM_57N
GCS_WGS_1984



Last updated:
08/2017