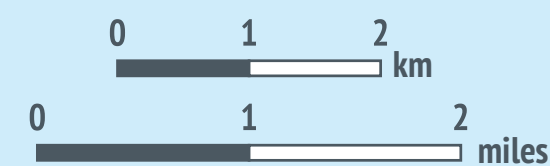
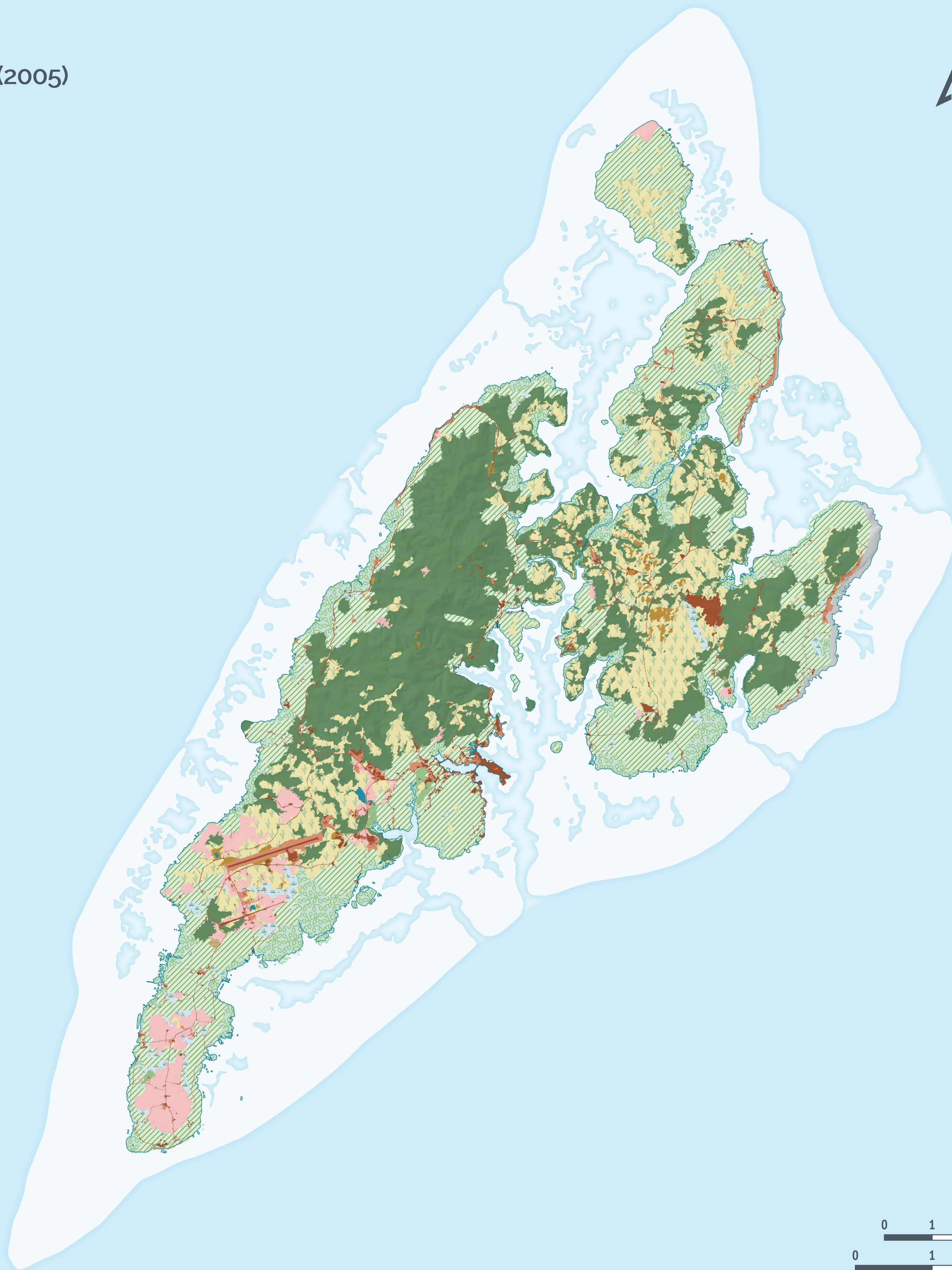


# YAP

## VEGETATION (2005)



### DIGITAL ATLAS OF MICRONESIA

Created by



Island Research & Education Initiative (IREI)  
[www.islandresearch.org](http://www.islandresearch.org)



Water and Environmental Research Institute of the Western Pacific (WERI)  
[www.weriguam.org](http://www.weriguam.org)



### YAP MODULE

Chief editor  
Co-editor  
Controller  
Advisors

Danko Taboroši  
Maria Kottermair  
Snyther Biza  
John W. Jenson  
Joseph D. Rouse  
Ibrahim Mohammed  
Jan Rykr  
Joshua Libyan Tun  
Caroline Dabugsiy  
Francis Ruegorong

Programmer  
Cartographer  
Reviewers

Supported by



National Government of the Federated States of Micronesia



US Geological Survey  
WRR1 104-B Program (2018)



[www.islands.fm/atlas](http://www.islands.fm/atlas)



Data used in this atlas are from a variety of sources. They include IREI, USGS, NOAA, USDA-NRCS/USFS, UOG, PDC, TNC, Yap CAP and the governments of FSM and Yap State. For the specific data used in this map, please see [www.islands.fm/atlas/sources](http://www.islands.fm/atlas/sources)



IREI  
PO Box PS 303  
Palikir, Pohnpei  
FM 96941

[irei@islandresearch.org](mailto:irei@islandresearch.org)  
[www.islandresearch.org](http://www.islandresearch.org)

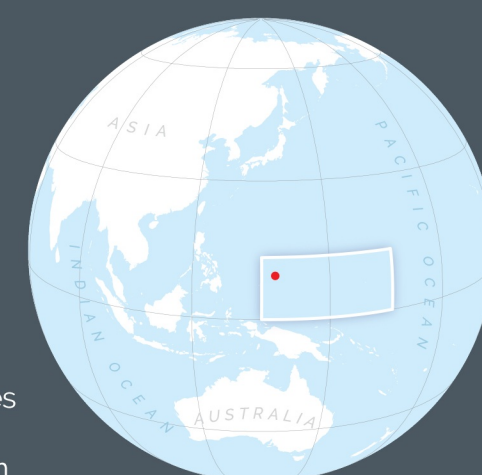
[www.facebook.com/irei.micronesia](https://www.facebook.com/irei.micronesia)  
[www.youtube.com/user/IREIvideos](https://www.youtube.com/user/IREIvideos)



This map is for educational and awareness purposes only. It contains no definitive positional or attribute information. See the full disclaimer at [www.islands.fm/atlas/disclaimer](http://www.islands.fm/atlas/disclaimer)



Location: Rectangle indicates the Federated States of Micronesia. Red dot indicates the location of the island shown on the main map.



UTM\_54N  
GCS\_WGS\_1984



Last updated: 04/2020